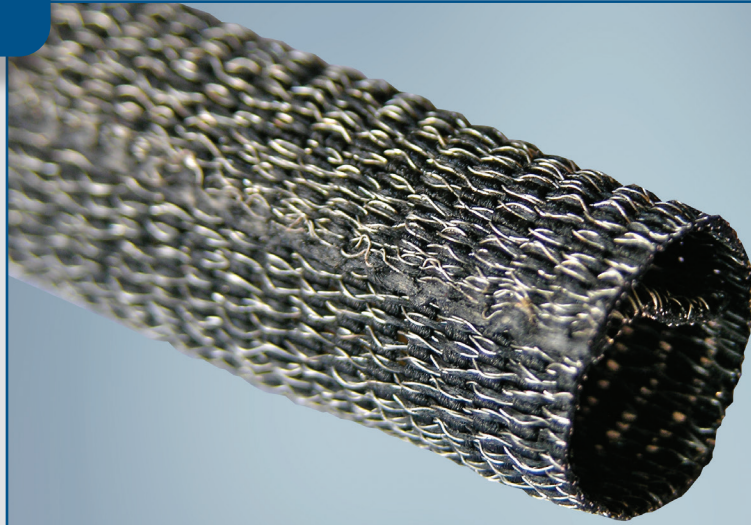


Product Highlights

- Operating temperature up to +150°C (+302°F)
- Provides electromagnetic shielding
- Self-wrapping design
- Stable woven construction

Typical Applications

- Instrument panel harnesses
- Engine compartment harnesses
- Battery cables
- Interior harnesses

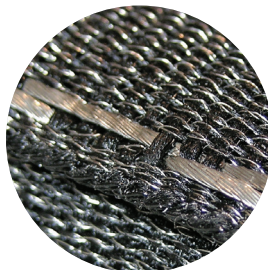


ROUNDIT® 2000 Cu EMI is a self-wrapping sleeve designed to provide >40dB of electromagnetic (EM) screening attenuation. Tinned copper wire is combined with polyester yarn to create a wrappable product that offers flexibility and consistent shielding protection. The product features an acrylic/silicone coating to prevent end fray and enable cold cutting for specific product lengths.

Unlike foils and films, ROUNDIT® 2000 Cu EMI is durable and tear resistant, enabling it to provide long term protection. The product is engineered to reduce installation time, accommodate breakouts and can be installed over completed assemblies. ROUNDIT® 2000 Cu EMI's stable woven construction eliminates performance variances commonly exhibited in traditional wire braids when used over varying harness thicknesses or when exposed to the stresses of pressure washing and extended handling.



Our manufacturing sites are certified ISO 9001, IATF 16949, or AS/EN 9100, ISO 14001 and ISO 45001 (Selected Sites)



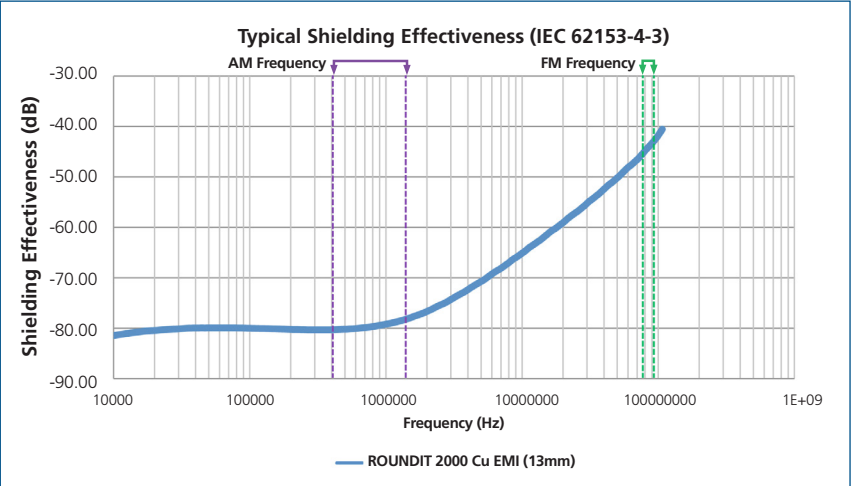
Special versions available with conductive fill yarn and integrated copper drain wires for electrical grounding purposes.

Performance Data – ROUNDIT® 2000 Cu EMI

Property	Test Method	Result
Temperature Rating	240 hours at +175°C (+150°F) rating	Pass +150°C (+302°F)
Low Temperature Flexibility	BH100-016A	Pass -70°C (-94°F)
Flammability	SAE J369	Self-extinguishing
Fluid Resistance	BH100-003B	Pass
Shielding Effectiveness	IEC 62153-4-3	See graph below

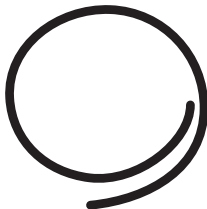
All numeric performance data shows average or typical values. Please consult your sales representative for product drawings, test reports and OEM approvals.

Shielding Effectiveness of Sleeving



Availability

ROUNDIT® 2000 Cu EMI is available in a range of sizes and cut to your specification. Color is black. Please contact your sales representative for availability.



End view of ROUNDIT 2000 Cu EMI illustrating self-wrapping construction.



United States: (1) 800 926 2472 • México: (52) 442 101 8100 • Brazil: (55) 19 3116 1600
EMEA: (33) 3 44 39 06 06 • Japan: (81) 45 330 0300 • China: (86) 21 6182 7560
Southeast Asia: (66) 35 276 400 • Korea: (82) 44 861 6368 • India: (91) 124 4784565
www.systemsprotection.com



For informational purposes only. SP makes no warranties as to the accuracy or completeness of the information provided herein and disclaims any liability in connection with its use. SP's only obligations are those provided in its terms and conditions of sale for this product, and SP will not be liable for any damages, whether direct or indirect, arising out of the use or misuse of this product. Users should undertake their own evaluations to determine the suitability of the product for specific applications. ©2024 Systems Protection - A Tenneco Company, manufacturer of Bentley-Harris protection products.