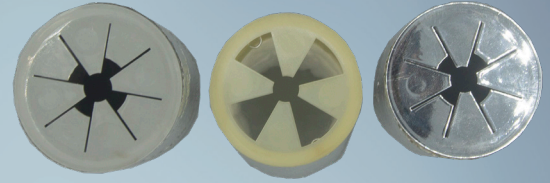
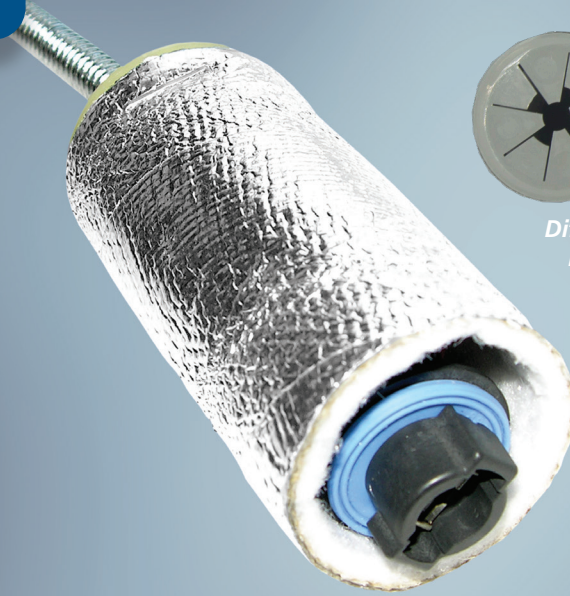


Product Highlights

- Operating temperature up to +175°C (+347°F)
- Maintains a round profile against radiant heat
- Fray resistant
- Excellent thermal protection
- Attractive appearance
- Customizable for increased installation benefit

Typical Applications

- Sensors
- Connectors



Different end caps to choose from, including a metallized version.

ReflectShield® 1486 is an aluminized, high bulk sleeve designed to provide thermal protection in high temperature environments. The outer layer is composed of an aluminum and glass fabric with the inner layer being composed of non-woven polyester.

ReflectShield 1486 maintains a round profile creating an air gap that maximizes the level of protection for sensors or connectors. ReflectShield 1486 is also available with a four or eight tine end cap that's engineered to accommodate a range of convolute sizes while allowing flexibility in the installation process. ReflectShield 1486 is customizable (angle cuts, notches, slits, etc.) which provides additional installation benefits by maximizing the protected area along with helping to locate the product in complex applications.



Our manufacturing sites are certified ISO 9001, IATF 16949, or AS/EN 9100, ISO 14001 and ISO 45001 (Selected Sites)

Performance Data – ReflectShield® 1486

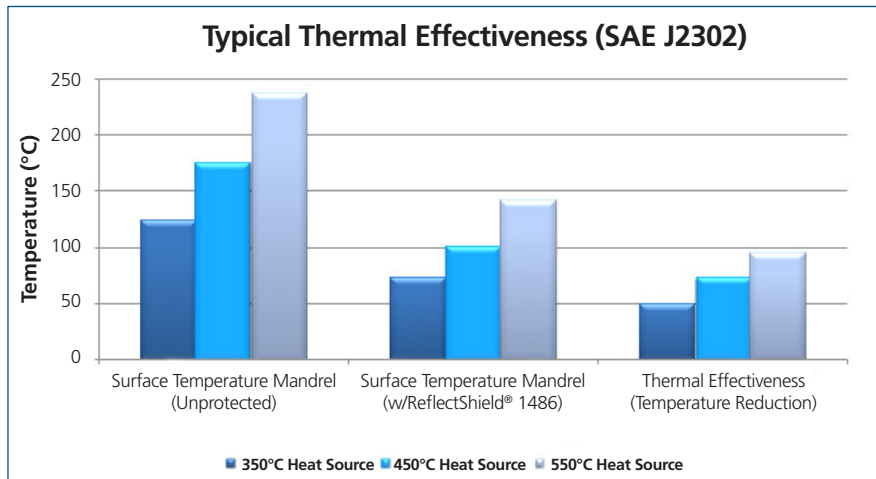
Property	Test Method	Result
Temperature Rating	168 hours at +175°C (+347°F)	No degradation
Thermal Endurance	BH100-503	No degradation or delamination (25mm above a +538°C heat source for 6 hours)
Low Temperature Resistance	BH100-016C	Pass -40°C (-40°F)
Flammability	SAE J369	Self-extinguishing
Fluid Resistance	BH100-003B	Pass

All numeric performance data shows average or typical values. Please consult your sales representative for product drawings, test reports and OEM approvals.

Construction and Typical Product Characteristics

Outer Layer	Aluminum/Fiberglass
Inner Layer	Polyester (PET) non-woven

Thermal Effectiveness of Sleeving Insulation



Note: Mandrel is parallel to and 25mm (1") away from heat source

Availability

ReflectShield 1486 is available in a 4 different diameters: 25, 32, 38, and 56 mm and in a variety of configurations:

- Straight
- With a notch
- With a slit
- With an angle cut
- With a hole
- With a metallized end cap (M-Version)

Available with 2 different caps (4 or 8 tines). Product can be customized to meet your needs. Color is aluminum (silver).

Please contact your sales representative for availability.



United States: (1) 800 926 2472 • México: (52) 442 101 8100 • Brazil: (55) 19 3116 1600
 EMEA: (33) 3 44 39 06 06 • Japan: (81) 45 330 0300 • China: (86) 21 6182 7560
 Southeast Asia: (66) 35 276 400 • Korea: (82) 44 861 6368 • India: (91) 124 4784565
www.systemsprotection.com

