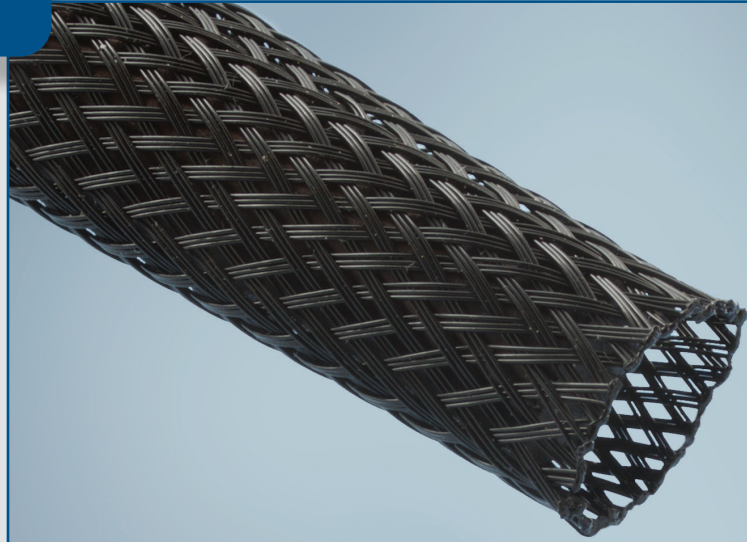


Product Highlights

- Operating temperature up to +150°C (+302°F)
- Expandable tubular sleeve
- Excellent abrasion resistance
- Excellent flexibility
- 1:2 Expansion Ratio
- Self-extinguishing
- Fluid resistant

Typical Applications

- Wire harnesses
- Hoses and tubin



FlexFit® 2112 is an expandable sleeving specifically designed for the abrasion protection of automotive wire harnesses, cables, tubings and hoses. Its specific structure combines both a high coverage ratio and a high expansion ratio which enables installation over long lengths even after the fitting of end connectors. It also allows a large number of diameters to be covered with a limited range of sizes.

FlexFit 2112 is constructed of modified polyester monofilaments. This unique construction ensures excellent protection against mechanical abrasion, resistance to common automotive fluids and self-extinguishing properties.



Our manufacturing sites are certified ISO 9001, IATF 16949, or AS/EN 9100, ISO 14001 and ISO 45001 (Selected Sites)

Performance Data – FlexFit® 2112

Property	Test Method	Result
Temperature Rating	240 hours at +150°C (+125°C rating)	Pass +150°C (+302°F)
Low Temperature Flexibility	SAE J2192	Pass -70°C (-94°F)
Flammability	SAE J369	Self-extinguishing
Fluid Resistance	SAE J2192	Pass
Melt Temperature	ASTM D3418	+245°C to +265°C (+473°F to +509°F)

All numeric performance data shows average or typical values. Please consult your sales representative for product drawings, test reports and OEM approvals.

Construction and Typical Product Characteristics

Polyester (PET) monofilament

Standard Sizes

Nominal Diameter (mm)	Recommended Application Range mm (in)	
	Min Ø	Max Ø
4	3	7
5	4	8
6	5	9
8	6	12
12	10	18
15	12	23
20	16	28
25	21	35
30	26	45
40	36	60
50	45	75

* Application based variables will influence the sleeve size required. Routing geometry and application type may present installation and fit challenges that should be considered. Max and Min values above are for guidance only. There may be multiple variations of this braid designed to facilitate installation and optimize fit. Proper sleeve sizing should be confirmed by the end user. Please consult your local sales representative for recommendations and support.

Availability

Standard sizes are listed here. Additional sizes could be available upon request.

Available in spools and custom cut lengths. Recommended cut lengths are in 5mm increments. Please see regional drawings for cut length tolerances.

Standard color is black. Additional colors may be available.

Please consult your local sales representative for regional packaging details and standards.



United States: (1) 800 926 2472 • México: (52) 442 101 8100 • Brazil: (55) 19 3116 1600
 EMEA: (33) 3 44 39 06 06 • Japan: (81) 45 330 0300 • China: (86) 21 6182 7560
 Southeast Asia: (66) 35 276 400 • Korea: (82) 44 861 6368 • India: (91) 124 4784565
www.systemsprotection.com

