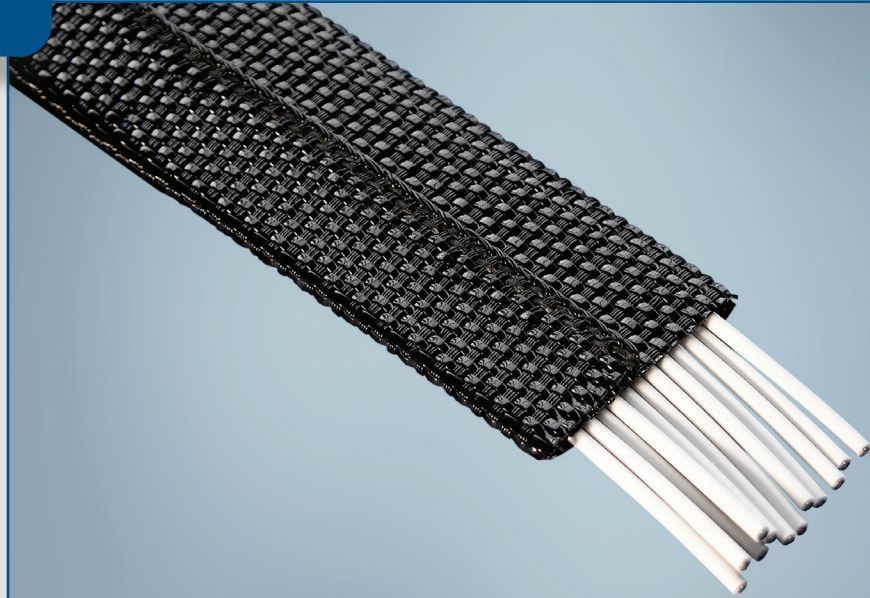


Product Highlights

- Operating temperature up to +125°C (+257°F)
- Maintains wires in flat configuration
- Excellent abrasion resistance
- Integrated mechanical closure
- Removable for maintenance
- Provides directional flexibility
- Lightweight & Low Profile
- Customizable

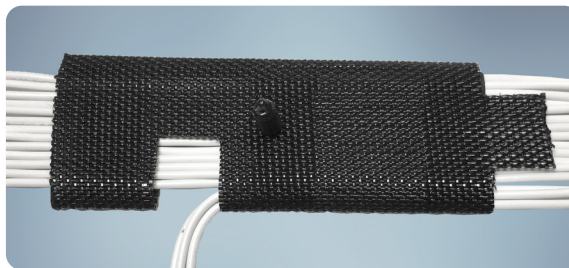
Typical Applications

- Wire Harnesses
- Under carpet wire assemblies
- Headliner wire assemblies
- Flat Wire assemblies
- Door Harnesses
- Seat Harnesses



FlatWrap® 2535 is an advanced textile structure engineered to facilitate the installation of round wire bundles into tight or confined spaces. Woven with lightweight thermoplastic yarns, the product maintains wire bundles in a flat, low profile. By forcing wires to lay in a flat position, the bundle size is reduced, allowing routing through confined areas such as under carpet, headliner, under seat and door harness applications. The combination of flexibility, strength and low bulk make FlatWrap 2535 an obvious choice for engineers requiring more design freedom than allowed by typical plastic channels.

Woven with an integral closure mechanism, FlatWrap 2535 opens to enable easy installation yet closes securely to maintain integrity of the wire bundle. The closure is designed to allow easy access for inspection, rework or replacement of components. The product's wrap construction also permits installation onto portions of already installed wire harnesses.



FlatWrap® 2535 can be customized to include notches, tape tabs and various attachment clips.



Our manufacturing sites are certified ISO 9001, IATF 16949, or AS/EN 9100, ISO 14001 and ISO 45001 (Selected Sites)

Performance Data – FlatWrap® 2535

Property	Test Method	Result
Temperature Rating	240 hours at +150°C (+125°C rating)	Pass +125°C (+257°F)
Low Temperature Flexibility	SAE J2192	Pass -40°C (-40°F)
Flammability	SAE J369	Self-extinguishing
Fluid Resistance	SAE J2192	Pass
Melt Temperature	ASTM D3418	+245°C to +265°C (+473°F to +509°F)

All numeric performance data shows average or typical values. Please consult your sales representative for product drawings, test reports and OEM approvals.

Construction and Typical Product Characteristics

Warp Yarn: Polyester (PET) monofilament

Fill Yarn: Polyester (PET) monofilament

Standard Sizes

Commercial Part Number	Nominal Internal Width (mm)
FlatWrap 2535 30	30
FlatWrap 2535 40	40
FlatWrap 2535 50	50
FlatWrap 2535 65	65
FlatWrap 2535 75	75

* Sizing is based on product width not harness diameter. Based on the product's design, there could be variables that impact size selection. Proper sleeve sizing is at the discretion of the end user. Please consult your local sales representative for recommendations and guidance to ensure proper functionality and optimized performance for your application.

Availability

Standard sizes are listed here, Additional sizes could be available upon request.

Available in custom cut lengths. Recommended cut lengths are in 5mm increments. Please see regional drawings for cut length tolerances.

This product is customizable. Please contact us to learn more.

Standard color is black. Additional colors could be available.

Please consult your local sales representative for regional packaging details and standards.



United States: (1) 800 926 2472 • México: (52) 442 101 8100 • Brazil: (55) 19 3116 1600
EMEA: (33) 3 44 39 06 06 • Japan: (81) 45 330 0300 • China: (86) 21 6182 7560
Southeast Asia: (66) 35 276 400 • Korea: (82) 44 861 6368 • India: (91) 124 4784565
www.systemsprotection.com

