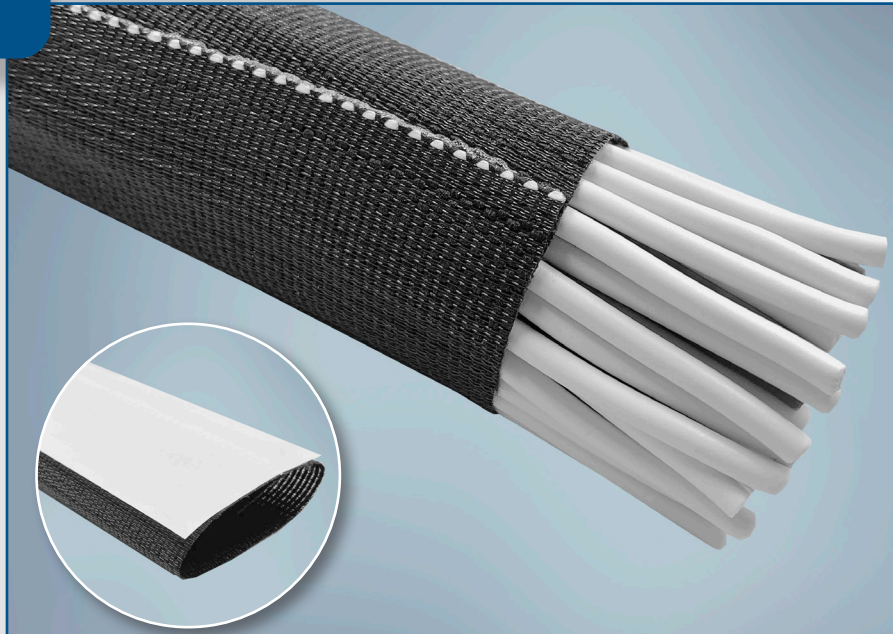


Product Highlights

- Operating temperature up to +150°C (+302°F)
- Excellent abrasion resistance
- Flexible and conformable
- Very easy installation
- Integrated closure system

Typical Applications

- Wire harnesses
- Vent Hoses
- TOC hoses
- Brake and shift cables



FastWrap™ is an open sleeve designed to offer a high level of component protection. Constructed with a combination of monofilament and multifilament yarns, FastWrap also incorporates an adhesive tape system to ensure secure closure of the sleeve.

The adhesive closure system is divided into two parts to ensure both location and closure. One adhesive strip helps hold the sleeve in place on the application while the second strip creates the secure closure. Installation is repeatable and optimizes material usage.

FastWrap is flexible, conformable, and adaptable to many diameters. The integral closure system enables the product to remain closed even when flexed or curved during routing. Easy to install, even on large lengths, FastWrap can reduce installation costs and the product is delivered in the flat form to provide the additional benefit of reduce transportation costs.



Our manufacturing sites are certified ISO 9001, IATF 16949, or AS/EN 9100, ISO 14001 and ISO 45001 (Selected Sites)

Performance Data – FastWrap™

Property	Test Method	Result
Temperature Rating	240 hours at +175°C (+150°C rating)	Pass +150°C (+302°F)
Low Temperature Flexibility	SAE J2192	Pass -40°C (-40°F)
Flammability	FMVSS 302	Pass
Melt Temperature	ASTM D3418	+245°C to +265°C (+473°F to +509°F)

All numeric performance data shows average or typical values. Please consult your sales representative for product drawings, test reports and OEM approvals.

Construction and Typical Product Characteristics

Warp Yarn: Polyester (PET) multifilament

Fill Yarn: Polyester (PET) multifilament

Adhesive System: Acrylic adhesive

Availability

FastWrap™ is available in nominal sizes 30mm and 40mm and cut to your specification. Recommended cut lengths are in 5mm increments. Please see regional drawings for cut length tolerances.

Standard color is black. Please consult your sales representative for regional packaging details and standards.

Standard Sizes

Commercial Part Number	Recommended Application Range		Standard Packaging m (ft)
	Min Ø mm	Max Ø mm	
FastWrap 30	21	30	TBC
FastWrap 40	31	40	TBC

Part Numbering System

Example	Product Name	Size	Color	Quantity
	FastWrap	30	0 (black)	TBC



United States: (1) 800 926 2472 • México: (52) 442 101 8100 • Brazil: (55) 19 3116 1600
EMEA: (33) 3 44 39 06 06 • Japan: (81) 45 330 0300 • China: (86) 21 6182 7560
Southeast Asia: (66) 35 276 400 • Korea: (82) 44 861 6368 • India: (91) 124 4784565
www.systemsprotection.com

